

6

5

4

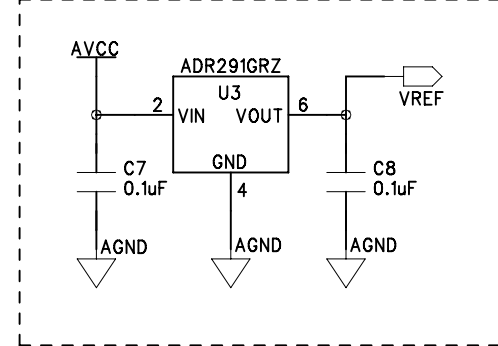
3

2

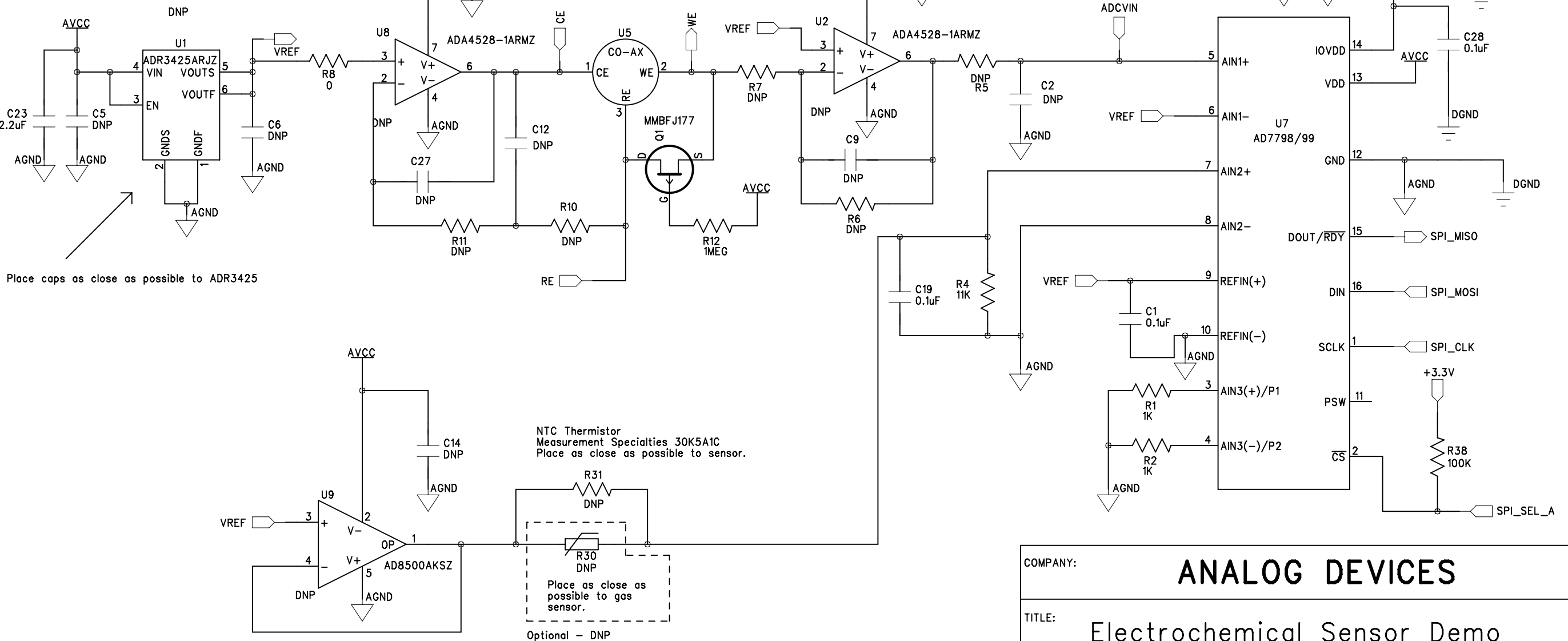
1

REVISION RECORD			
LTR	ECO NO:	APPROVED:	DATE:
1		L. Orozco	Jan 12

Micropower, Sourcing Only Reference  
Populate instead of ADR3425



Tie AGND and DGND near/under AD7798



COMPANY: ANALOG DEVICES			
TITLE: Electrochemical Sensor Demo Low Noise Front End			
CODE:	SIZE:	DRAWING NO:	REV:
		EVAL-CN0234-SDPZ	2
SCALE:		SHEET: 1 OF 2	

DRAWN: L. Orozco	DATED: Jun 11
CHECKED:	DATED:
QUALITY CONTROL:	DATED:
RELEASED:	DATED:

6

5

4

3

2

1

Low Cost, Very Low Power Front End

Optional  
Place near board edge

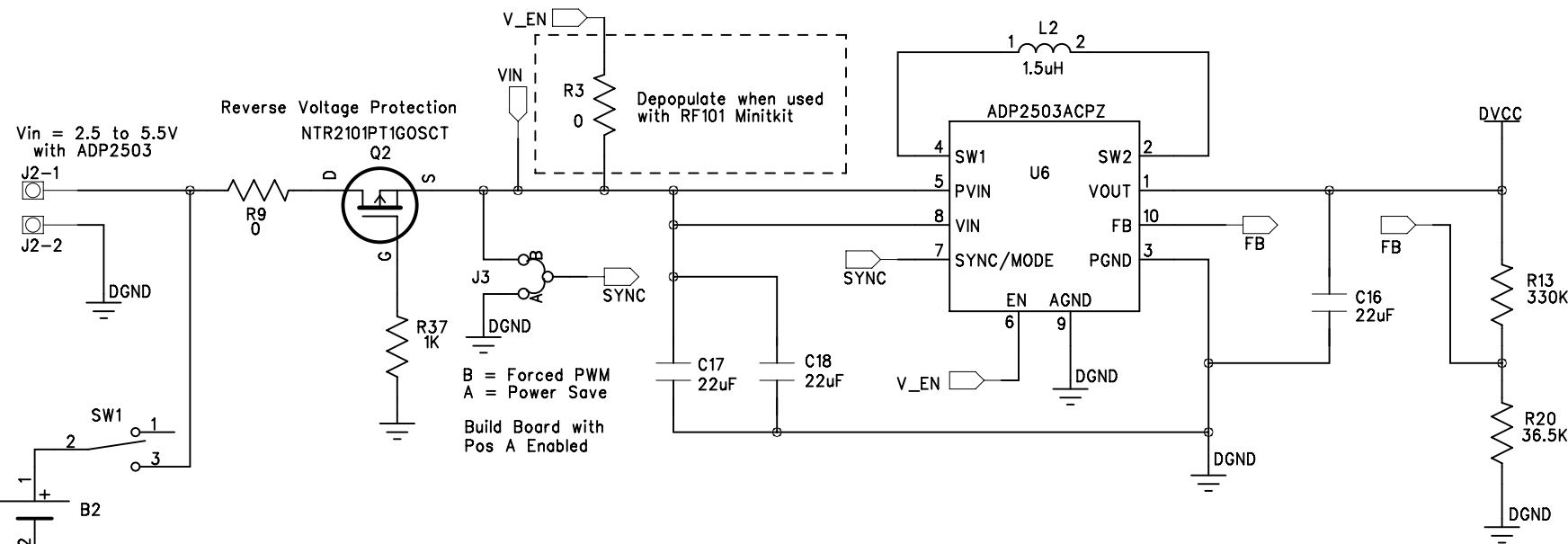
Populate only if connecting to  
an unbuffered ADC

These nets go to  
the sensor on page 1.

For standalone version,  
connect piezo-buzzer here  
For example, Digikey PN 668-1204-ND

REVISION RECORD

LTR	ECO NO:	APPROVED:	DATE:
1		L. Orozco	Jan 12



ADD SILKSCREEN POLARITY  
MARKINGS TO BATTERY CLIPS  
AND SCREW TERMINALS  
ADD ON-OFF LABEL TO SW1

COMPANY:

Analog Devices

TITLE:

Electrochemical Sensor Demo  
Low Power Front End and Power Mgmt

CODE:

SIZE:

DRAWING NO:

REV:

EVAL-CN0234-SDPZ

2

SCALE: <Scale>

SHEET: 2 OF 3

DRAWN:	DATED:
L. Orozco	June '11
CHECKED:	DATED:
QUALITY CONTROL:	DATED:
RELEASED:	DATED:

6

5

4

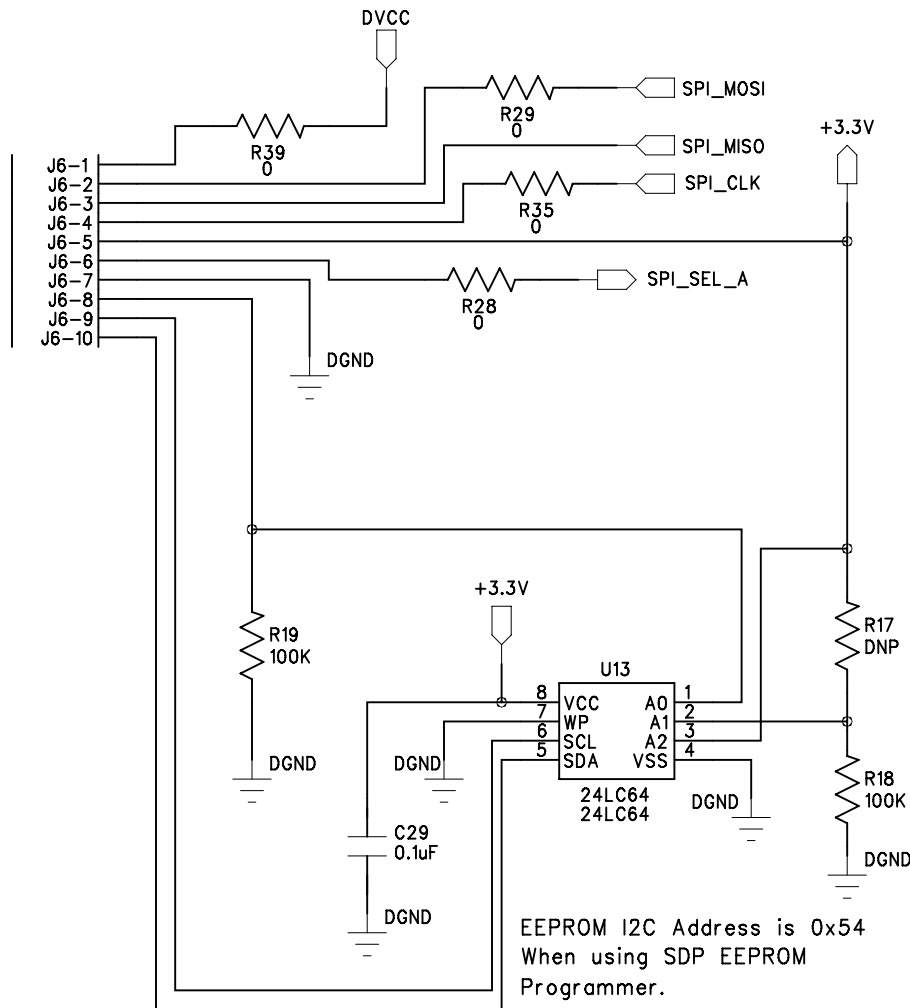
3

2

1

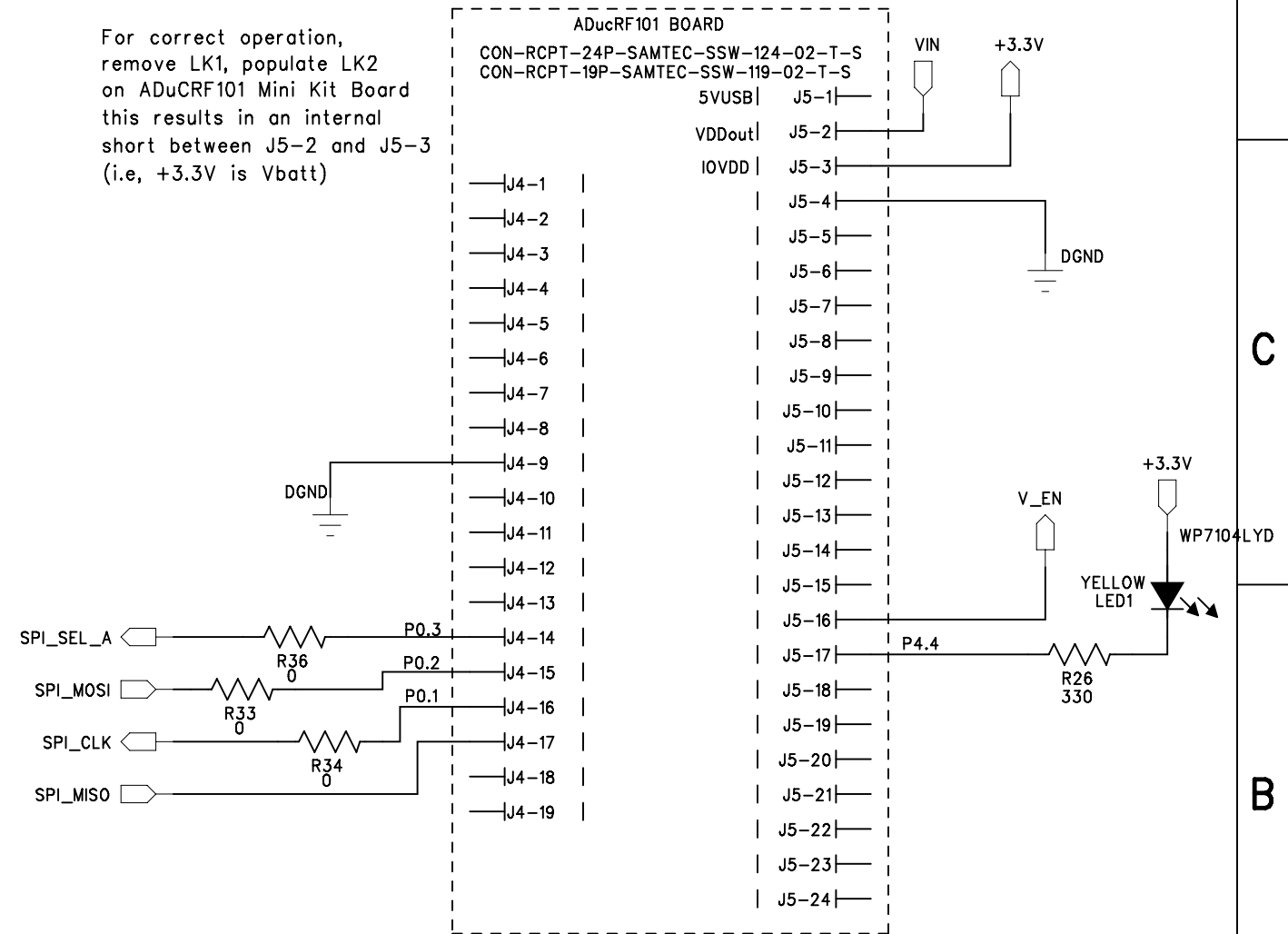
REVISION RECORD			
LTR	ECO NO:	APPROVED:	DATE:
1		L. Orozco	Jan 12

PLACE CONNECTOR OPPOSITE TO RF101 HEADERS



Connection to SDP Breakout Board  
5V DVCC powers SDP Board when 0 Ohm is populated at J6-1  
3.3V from SDP board powers ADC IOVdd

For correct operation,  
remove LK1, populate LK2  
on ADuCRF101 Mini Kit Board  
this results in an internal  
short between J5-2 and J5-3  
(i.e, +3.3V is Vbatt)



COMPANY:		ANALOG DEVICES	
TITLE:		Electrochemical Sensor Demo SDP and ADuCRF101 Connectors	
CODE:	SIZE:	DRAWING NO:	REV:
		EVAL-CN0234-SDPZ	2
SCALE:		SHEET: 3 OF 3	

DRAWN:	DATED:
L. Orozco	Jun 11
CHECKED:	DATED:
QUALITY CONTROL:	DATED:
RELEASED:	DATED: